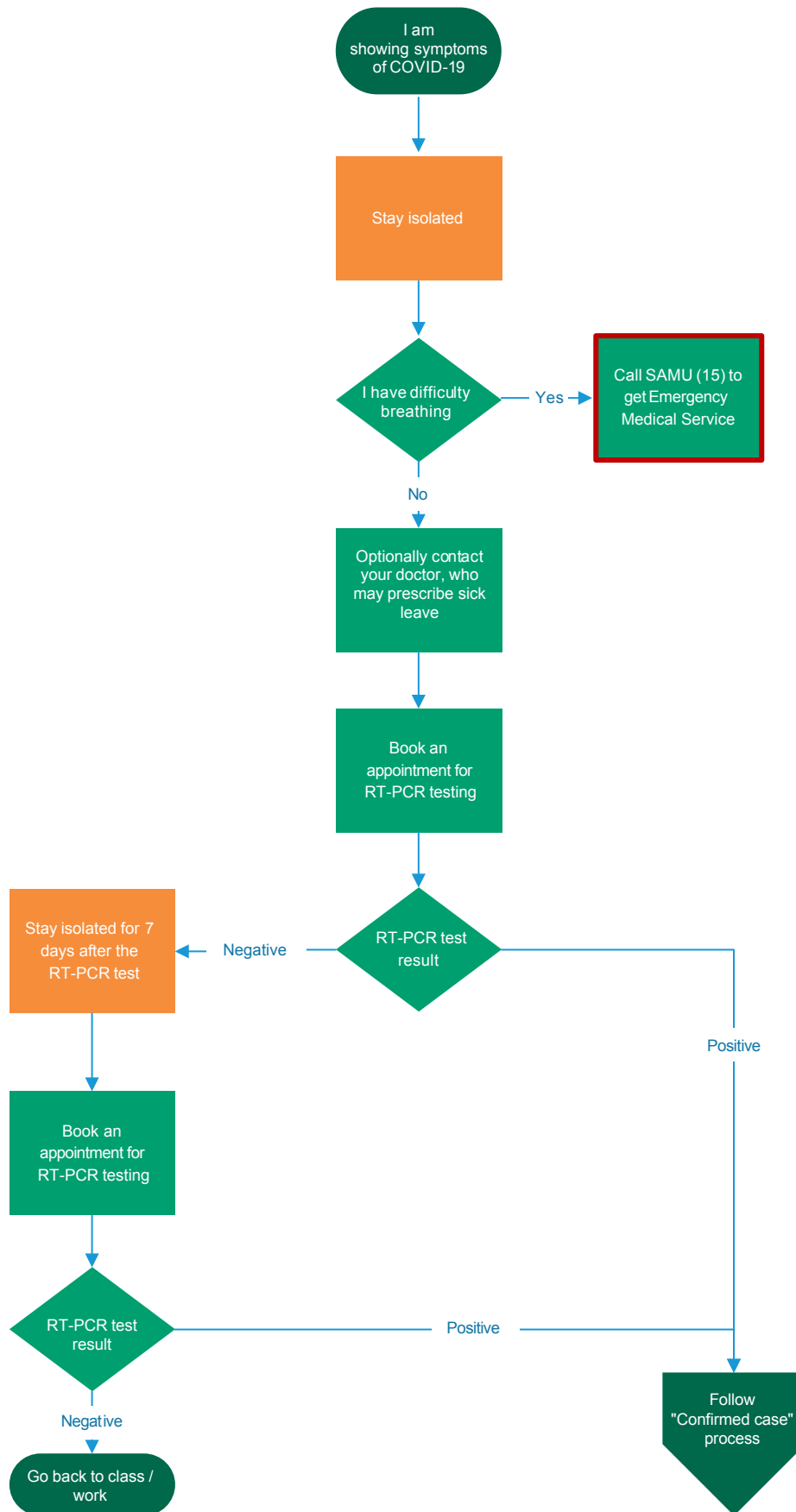


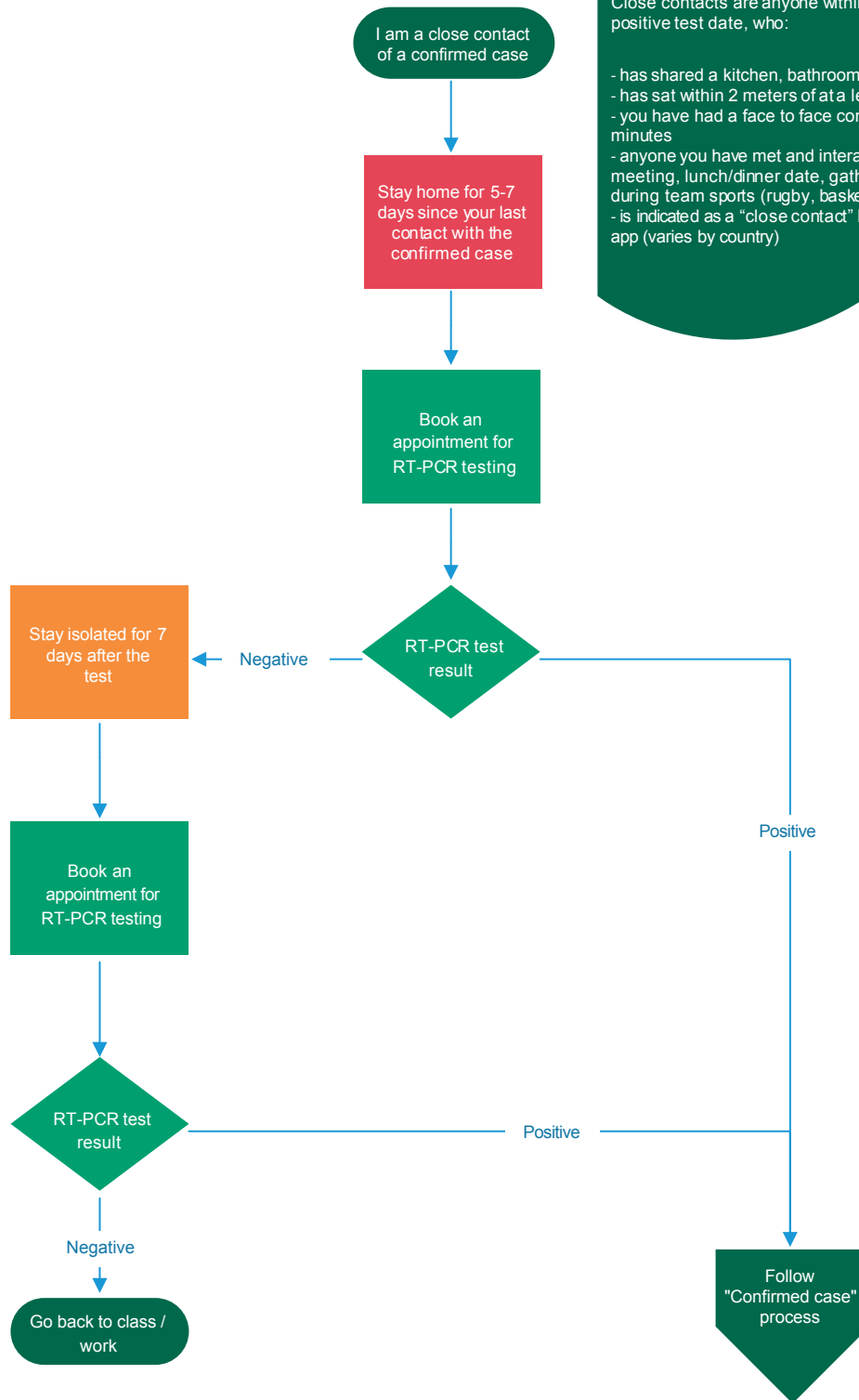
# What to do if I am showing symptoms of COVID-19



# What to do if I am a close contact of a confirmed case

Close contacts are anyone within the past 7 days prior to the positive test date, who:

- has shared a kitchen, bathroom or living room
- has sat within 2 meters of at a lecture
- you have had a face to face conversation lasting longer than 15 minutes
- anyone you have met and interacted with at a party, event, meeting, lunch/dinner date, gathering or otherwise, including during team sports (rugby, basketball)
- is indicated as a "close contact" based on the applicable tracing app (varies by country)





# What do I do if I am a confirmed case, my RT-PCR test is positive

