

SCREENING & ANALYTICS INTELLIGENCE

Screening

The **SCREENING & ANALYTICS** tab has several search options, including: Company, Fixed Income, Person, Key Development and Transaction Screening, Find Buyers, Find LP's, Create Comp Set and Charts.

Best Practices:

- Find companies that meet specific financial and/or qualitative criteria through Company Screening
- Create a Comps List
- Generate a report and save a specific universe of companies

Company Screening

To start your Company Screen, browse over the **Screening & Analytics** tab at the top of the page, browse over **Screening**, and then click **Companies**. The page will load our Screen Builder.

Screen Builder

Define the universe of companies you want to see by selecting criteria such as Company Details, Financial Information, Corporate Actions, Investment Criteria, and Coverage Management.

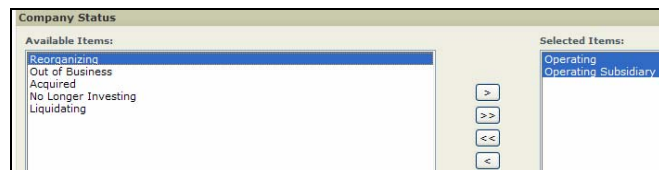
Note: You can use the **Search Data Points** search box to find any data point throughout all of screening. Highlighting the desired data point and clicking **Go** will automatically open the results with the data point pre-selected.

Company Details

Limit your search by the following criteria:

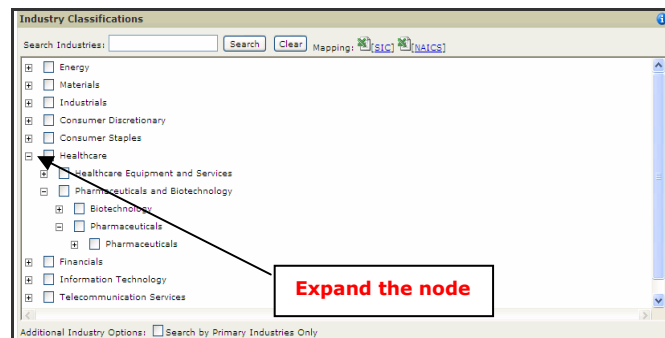
- Industry Classification
- Geography Classification
- Business Descriptions
- Company Status (i.e. Operating, Reorg/Ch 11)
- Company Types (i.e. Public, Private)
- Public Ownership (i.e. Insider Shares Sold)

To screen on Company Details, click into the link (i.e. Company Status) and select from the available items on the left hand menu.



When screening on Industry and/or Geography Classifications, click into the link to access our trees:

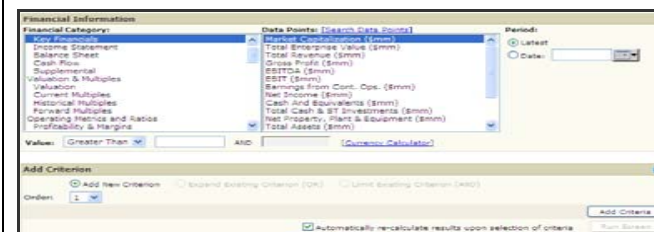
- Click on the ⊕ sign to the left of any industry/geography node to expand the tree.
- Keyword search through the tree: Enter text at the top of the screen and click Search until you find your desired industry/geography.
- Check the desired nodes and click the **Add Criteria** button at the bottom right.



Multiple industries/geographies can be selected in one screen and will be treated with "or" logic unless specified otherwise. You can limit to **Primary Industry (or Geography) Only** by clicking the box located below the tree.

Financial Information

Choose a Financial Category (i.e. Financial Statements or Valuation & Multiples), pick a *Data Point* and corresponding *Time Period* by highlighting your selections. You can keyword search specific data points and select *Time Periods* from a list of relative and absolute dates such as LTM and LTM-1 as well as Annual 2004 and Quarterly 2004 Q3, etc. Designate an operator (greater than, less than, between, equals) input a number, and click **Add Criteria**.



Custom Data Points & Formulas

To build a Custom Data Point, click into *Create Custom Data Point* under the Formula Builder section of Screen Builder, choose from the available *Financial Data Points* and *Time Periods*, click *Add to Data Point*, and then click **Save**.

To build a Custom Formula, click into *Create Custom Formula* under the Formula Builder section of Screen Builder, choose from the available *Financial Data Points* and *Periods*, click *Add to Formula*, and utilize the calculator on the left to complete your formula. Once the Custom Formula is created, click the checkbox for *Name and Save this Formula* and then click **Add Criteria**.

Note: You can add data points (regular or custom) as a Value, CAGR, Percent Change, Average, Min, Max, or Standard Deviation when creating formulas.

Qualitative Information

Screen for qualitative information such as Corporate Actions (Shareholder Activity, Insider Trading, Deal History, Bankruptcies) and Key Developments (Executive Changes, Share Repurchases, Positive/Negative Earnings Announcements).

Screening Tips

- **Adding Criteria:** Screening allows you to add new criteria to your screen as a AND/OR search using the *Add Criterion* section.
- **Adjust Screening Order:** When you are finished adding criteria, adjust the order of results by changing the numbered drop-down boxes and clicking the **Reorder** button.



- **Name and Save This Screen:** Click into the ⊕ Save Screen Options to name and save your search, and set appropriate access levels. You or your colleagues can access saved screens by clicking into Company Screening and selecting "My Saved Screens".

Viewing Results

The number of results associated with the last criterion reflects your most targeted search; click on Total Matching Companies/People/Key Developments/Transactions/Securities to display company names and corresponding characteristics.

Saving Results

In addition to saving results to a target list or comp set, click into **Select List** to build a watch or coverage list from your screen.

Reporting Options

Custom Reports: Once you build a list and you're on the results page, click **Customize** to add other relevant information before generating a report. You can save display criteria as a template and utilize it for other screens by clicking the empty checkboxes next to the fields selected, clicking into Options, and then clicking **Save to Template**.

Summary Reports: For a summary report that includes your companies and screening criteria, go to your **Screening Results** page, select *Word* or *Excel*, select the number of companies to include in your report from the **Number of Companies** dropdown, and then click **Go**.

Person/Key Development Screening

Screen for people by person details such as industry, function, school, degree and more. Screen for key developments (event driven news such as share repurchases) by categories, types, dates, and more.

Transaction/Fixed Income Screening

Screen for transactions/fixed income securities by specific items such as dates, industry, transaction/security valuation, and more.

Idea Generation Screens

Access pre-filled screens for Idea Generation in Undervalued Companies, Distressed/Potentially Distressed Situations, Arbitrage/Special Situations and more.

To get to this, click into **Screening & Analytics**, click into **Idea Generation Screens** and then, click into any one of our Idea Generation screens to modify pre-filled criteria and/or view results.

Comparable Company Analysis

A Comp set can be created within Capital IQ by entering ticker symbols or by screening. You can also create a Comp set using our Excel Plug In.

Create Comp Set by Ticker Symbol

1. In the **Screening & Analytics** tab, click directly on **Build a Comp Set By Entering Tickers**.
2. Create a Project (Enter Project Name and Type) or select an existing Project.
3. Enter a Comp Set name.
4. Enter subject company ticker (if desired) and comparable company tickers separated by commas.
5. Click the **Submit** button.

Create Comp Set by Screening

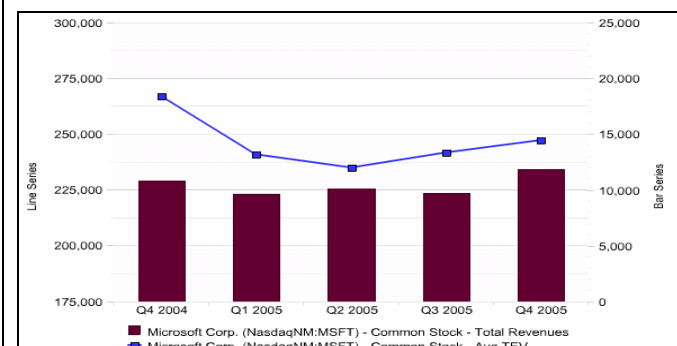
1. Click into **Screening & Analytics** and select **Build a Comp Set by Using Company Screening**
2. Create a Project (Enter Project Name and Type) or select an existing Project Name.
3. Enter a Comp Set Name.

(See *Company Screening* section for more info)

Advanced Charting

Best Practices:

- **Build charts on one or multiple companies at a single point or over time**



(For reference purposes, we used the **Financial Periods Chart**.)

Within **Charting** click on the desired Chart Type. You will be given the option to:

- Select Financial Metric.
- Choose Time Frame (up to 15 Calendar years), Frequency (Annual, Quarterly, LTM), and Restatement Type.
- Add individual companies or companies from saved lists in Capital IQ.

Click **Generate Chart**. To export the chart and the underlying data, click the Excel icon.